



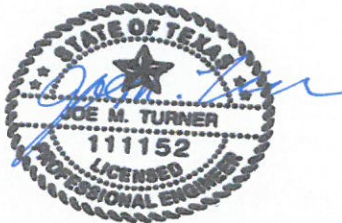
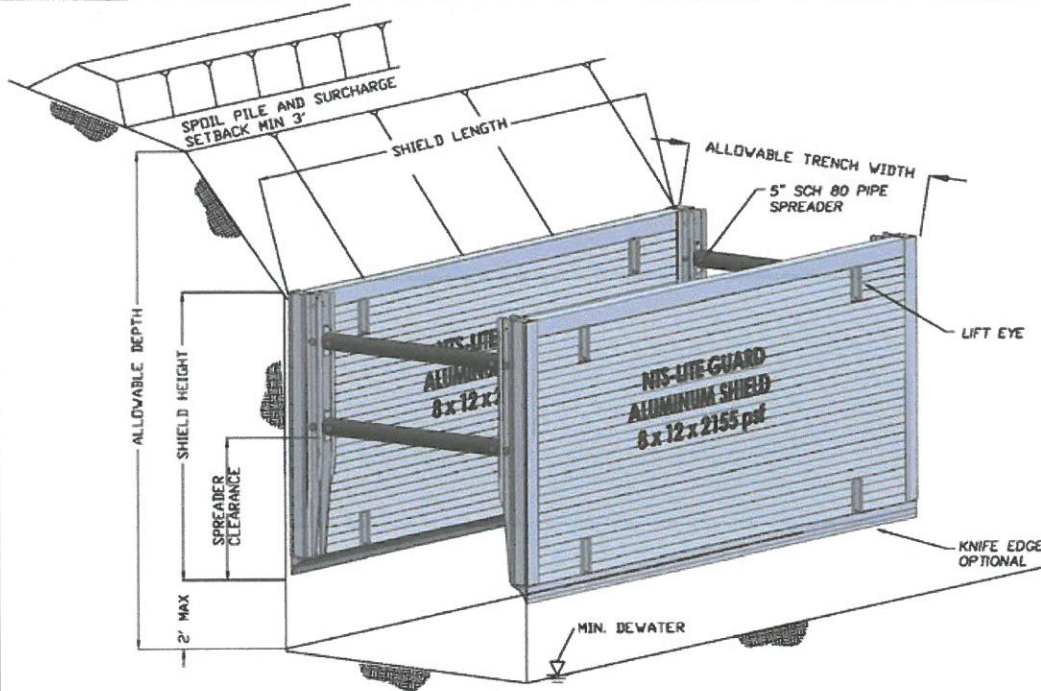
**NATIONAL  
TRENCH SAFETY**

260 N. Sam Houston Pkwy E, Suite 200  
Houston, TX 77060

**MANUFACTURERS TABULATED DATA  
NTS LITE GUARD™ ALUMINUM SHIELD**

**8' x 12 x 6" WALL 2155 PSF**

Serial No. NTS-LG1702001



LITE-GUARD SHIELD TABULATED DATA			
Height (ft)	Length (ft)	Wall (in)	Weight* (lb)
8	12	6	3213
Wall Strength		2155 PSF	
Bottom Configuration		Flat Bottom	
Spreader		5" sch 80 Pipe	
Spreader Clearance		50 in	
Allowable Trench Width		14 ft	
Allowable Depth (ft)			
A-25	B-45	C-60	C-80
30	20	20	20

\* Weight is for shield walls only, add 25 lbs per foot of spreader length for spreader and pin weight. For example if spreader length is 12 ft add 4x12x25 = 1200 lbs

**NOTES**

- 1) This tabulated data is in accordance with requirements of Federal OSHA 29 CFR Part 1926 Subpart P 1541.1(c)(2) Manufacturers Tabulated Data. All other OSHA Subpart P excavation requirements apply.
- 2) This tabulated data and shoring shield shall be implemented and used by a competent person that has had instruction and experience in the field with this type of shoring application.
- 3) Soil shall be classified in accordance with OSHA Appendix A prior to utilizing this tabulated data to determine the allowable depth.
- 4) This tabulated data is provided for worker protection only. Protection of existing facilities and surrounding structures utilizing this equipment should be determined by an experienced person or engineer.
- 5) Lite Guard Shields are aluminum weighing approximately 60% less than steel shields. These shields should not be pounded on or driven into the soil. Use caution during movement and handling, they are subject to puncture and denting from excavator bucket teeth. See NTS Lite Guard Shield installation and handling procedures for further information.

NTS Engineering  
[www.ntsafety.com](http://www.ntsafety.com)  
(707) 540-0588

Job #  
Drawn B  
Sheet

EF